



ip

**World-class beverage
inspection solutions**

Who are we

Industrial Physics’ test and inspection solutions have revolutionized the beverage market over the last 50 years.

When you’re dealing with bottles, cans and metal packaging, you’ll need reliable inspection machines to ensure the quality of your drinks. With Industrial Physics, you’ll improve the efficiency of your processes and improve your product. Saving yourself time and money and ultimately, you’ll keep your customers happier.

Through our leading brands – including CMC KUHNKE, Steinfurth, Quality By Vision, Eagle Vision, TQC Sheen, and Systech Illinois – we’ve helped thousands of beverage fillers and breweries to taste success. It’s now more than two decades since we became a recognized world leader in this market, when we invented automatic, double seam inspection.

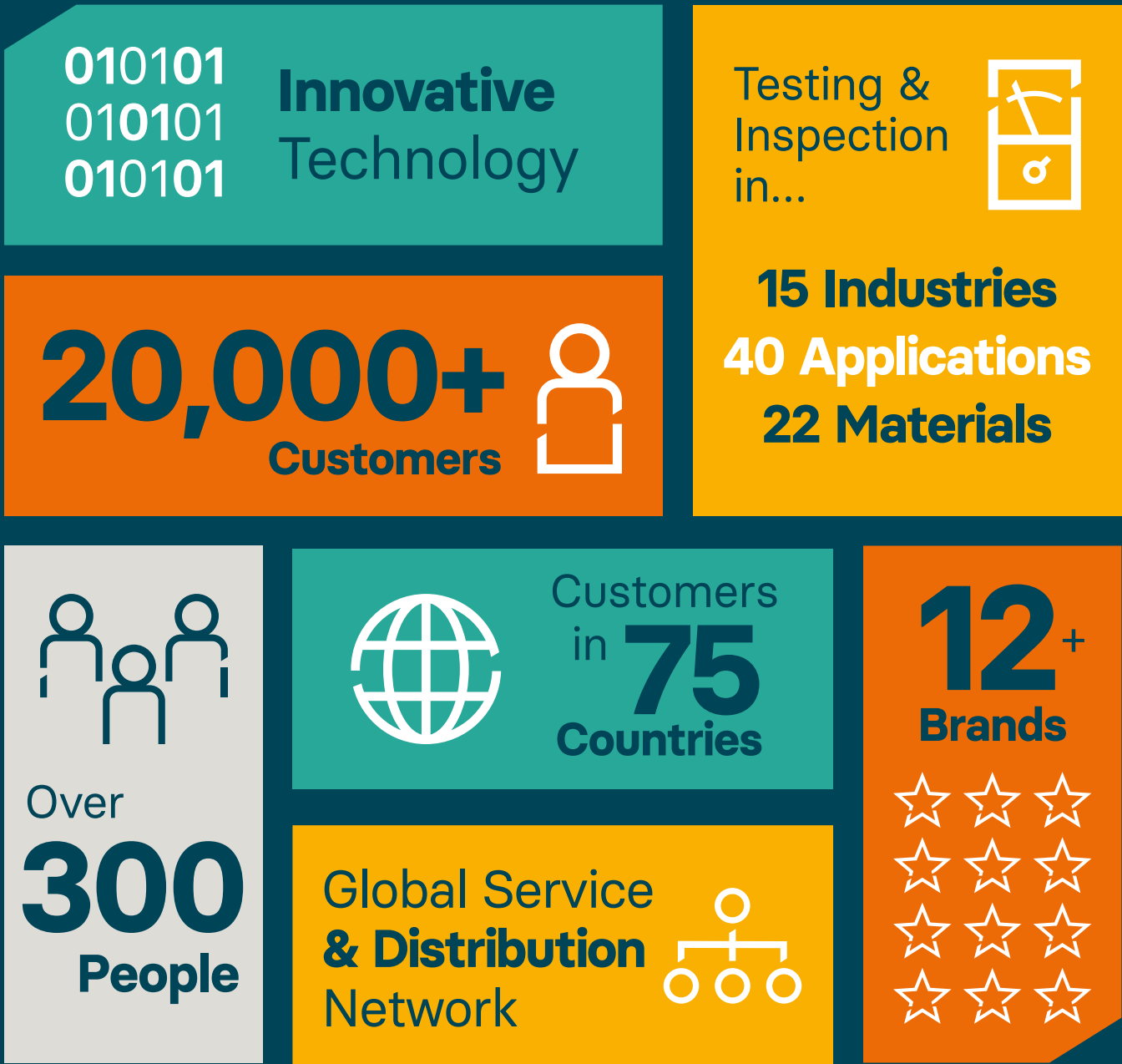
Now we make gauges, testers, vision inspection systems and software to check your finished product quality and packaging integrity. From seam

inspection and metal can testing to inline inspection of empty and filled containers, our devices offer unmatched innovation and help you meet your quality needs.

Whatever the beverages you manufacture and distribute, whether you make or fill cans or bottles – or simply supply them – we have the quality and process control systems to make your life easier. From fizzy drinks to craft beers, we will help your products to pass the taste test.

Thanks to our global network of technical and support experts, advanced technology and more than 100 years’ quality checking experience, we’re able to provide trusted and personalized solutions to businesses all over the world.

About Industrial Physics



Testing and inspection equipment for breweries and beverage fillers

At Industrial Physics we make highly accurate, cost-effective testing equipment to check the integrity of your products at key points in the canning and filling process.

Some of the instruments we make deal with:

- Bottle, keg and can vision inspection equipment
- Crush testing
- Double seam inspection
- Headspace and dissolved oxygen testing
- Non-destructive seam inspection
- Permeation
- Pressure testing
- Torque testing.

Non-destructive seam inspection

Our popular XTS product line provides non-destructive testing to check the integrity of your cans' seams.

CMC KUHNKE Auto XTS

A fully-automated, on-line or stand-alone measurement system that provides non-destructive, double seam inspection for beverage fillers.

It measures double seam inspection (seam thickness, countersink depth, seam height, body hook, cover hook, overlap, seam gap, % body hook butting and optional can height) as well as wrinkle rating (% Tightness).



CMC KUHNKE XTS III

A stand-alone measurement system that provides non-destructive, double seam inspection for round cans (aluminum or steel).

It measures double seam inspection (seam height, body hook, cover hook, overlap, seam gap, % body hook butting) and wrinkle rating (% tightness).



Double seam inspection

Our pioneering double seam inspection – custom made for beverage producers is an accurate, repeatable and fast double seam measurement system.

CMC KUHNKE SEAMscan SPC

The SEAMscan SPC system is an affordable, high-resolution tool for double seam inspection and measurement with SPC reporting.

Features measured include seam thickness, countersink depth, seam height, body hook, cover hook, overlap, seam gap, % body hook butting and optional can height as well as wrinkle rating (% tightness).



Quality By Vision SEAMetal Lite

Quality by Vision SEAMetal HD High-definition double seam measurement system for beverage and beer cans, a flexible solution for double seam testing.



Double Seam Accessories

We manufacture the full range of digital gauges for double seam thickness, countersink, can height and more. They're standalone, or can be connected to the SEAMetal/SEAMview systems.

Seam saws and seam strippers

We make the safest, easiest-to-use, proven equipment for cross-section seam cutting. And for stripping a double seam for wrinkle/tightness rating.



Quality By Vision Seamer setup and adjustment

The Quality By Vision seamer setup camera is the only tool that improves the double seam quality and prevents leakers by solving seaming issues at the source – the double seamer.

It measures the roll-to-chuck distance (height and thickness) and displays tooling profiles.



Headspace testing

Our advanced headspace analyzers are equipped with integral sampling systems. They feature unique, miniature zirconia and infrared sensors and microprocessor controls. This long-life technology gives you the most accurate and repeatable performance possible.

Systech Gaspacer 6000 advance

An O₂ and CO₂ tester that delivers the most advanced features in headspace gas analysis.

Offers automatic calibration, diagnostics and control which ensures that the instrument is always performing to its highest degree of accuracy – essential for HACCP compliance.



Combined Analysis of Beverage and Package Quality

Whether you need to find and inspect the best metal containers for your beverages, to control the CO₂ levels contained in your carbonated drinks, or check your choice of crown closures, we make all of the devices you need.

The Steinfurth Automatic CO₂ Tester CDA MK-6

The innovative CDA MK-6 gives you perfect CO₂ monitoring for a variety of packaged beverages including cans and bottles with a metal, or plastic, closure.

This innovative tester measures pressure and temperature simultaneously, calculates the CO₂ content and transfers the measurement results via data-interface to the base-unit.

It comes with QS based automatic workflow management for repeatable results based on the physical laws of Henry & Dalton. With easy check and calibration, low maintenance requirements and operator independent functioning, this robust device offers a fast return on investment.



The Steinfurth Bottle Pressure Tester (BPT)

The Steinfurth BPT is a reliable, handheld device that measures the internal pressure of glass and PET bottles with crown closures.

It attaches ergonomically to a glass bottle. It pierces the closure, then reads the internal headspace pressure from a digital or analogue pressure gauge attached to the piercing mechanics.

The Steinfurth BPT is easy for one person to operate, plus it's customizable to suit most shapes and sizes of bottles.



The Steinfurth Digi-Vacu

The Steinfurth Digi-Vacu is a digital vacuum tester that's built for precise manual pressure and vacuum monitoring. This reliable handheld device measures the internal pressure of beverage cans, food cans and bottles with metal closures

The highly accurate digi-vacu pierces your beverage or food package to test the vacuum pressure. The food grade sensor membrane guarantees headspace-free pressure transmission. The results are shown clearly on an LCD screen and the data can be optionally memorized or transferred to your PC.

The Steinfurth Digi Vacu is a robust, long-life machine with selectable measuring units and simple one-button operation.



The Steinfurth PastControl

When you produce pasteurized beverages you need complete control over your inspection process. Too little pasteurization can lead to microbiological product changes, too much affects taste.

The Steinfurth PastControl system features a temperature logger and pasteurization unit (PU) monitor. Attached to a can or bottle, the logger moves through the pasteurization tunnel. Both the temperature at a selected (coldest) spot inside the container and the spray temperature can be measured and recorded.

The logger is fitted to the PU monitor so the number of pasteurizing units (PU) can be read from the LCD display. Plus you can store the recordings in the logger's memory to evaluate later.



The Steinfurth Drop Cart Tester (DCT)

The Steinfurth DCT is a precise testing device designed to perform standardized drop cart testing on beverage cans and metal bottles.

Carry out both drop testing and can abuse resistance testing (CART) on your beverages. Through the drop test your sample can is dropped onto a plain anvil plate from ever-increasing heights. CART follows a similar process – your specimen can is dropped onto another anvil plate, from a fixed height.

The standardized test procedure, with easy, automated drop height adjustment gives you repeatable results at any test place. You can make adjustments for different can diameters and it's great for testing aluminum bottles too.



The Steinfurth Shoulder Cart Tester (SCT)

The Steinfurth SCT was built to deliver standardized shoulder impact testing and support can abuse resistance testing (CART) on cans and metal bottles.

Adjust and secure your sample in the can holder, then use the easy drop height adjustment to set up the test conditions. Push a button and an impact weight is triggered, dropping repeatedly onto your metal package.

The standardized test procedure gives repeatable, reliable results.



The Steinfurth Side Wall Abuse Resistance Tester (SWART)

The Steinfurth SWART gives you control over your SWART testing on cans and metal bottles.

A drop weight falls on your pressurized beverage packaging from different pre-programmed launch heights and a destroyed sample is automatically detected.

The SWART is developed for automatic and user independent monitoring. To optimize the efficiency of the process, each SWART is pre-programmed with standardized, fully automated and semi automatic test procedures.



Steinfurth Tumbling Tester (TT)

The Steinfurth TT abrasion test will determine the performance of your crown closure coatings.

It tumbles a number of your crown closures together over a defined period of time. The abrasion test will identify if any excessive dust is created – important to know as dust particles can contaminate a bottled beverage.

Find out how your crown closures will survive the hazards of your supply chain with this easy to load tumbling device that gives repeatable, reliable results.



The Steinfurth LCS 710P

Need to determine the right CO₂ content of your beverages and the correct metal cans and bottles to contain them in? The Steinfurth LCS 710P is the device you need.

It will fill your sample beverages with the precise levels of CO₂ you desire. The versatility of the different carbonation settings makes light work of sample preparation and helps you to identify the optimally crafted product.

The low maintenance LCS 710P will improve your quality control and save you time and money. This popular device gives accurate, repeatable results and adjusts to fit many bottle types.



Abrasion testers

Ensure the integrity of your high-quality, long-life span metal packaged goods.

TQC Sheen Comprehensive Abrasion Tester

A universal test machine to inspect the coating abrasion resistance on beverage cans containers with labels or flat materials. The reciprocating motion mimics in-field transportation abrasion damage.



TQC Sheen Scrub Abrasion and Washability / Solvent Resistance Tester

Simulates real world wear and tear from cleaning and general use. So you can test how scratch and color fade resistant your paints, varnishes or coatings are to wet or dry abrasion.



Additional Industrial Physics solutions

OxySense 325i & 5250i

A non-invasive oxygen measurement system. Ideal for lab technicians who want to measure oxygen headspace, dissolved oxygen and film or package permeation rates. As it doesn't consume oxygen, it's the perfect tool for shelf-life analysis.



Eagle Vision Empty Can Inspection

This smart device quickly and accurately detects defects on the flange, bottom and the inner sidewalls of your cans.



Eagle Vision 360 Label Inspection

Provides you with a complete final inspection of your labelled bottles. Giving you a 360° field of view that checks for correctness, position, misprints and damages.




Support & services

We believe that supplying you with high quality testing instruments is only part of our job. Being fast, efficient, and truly reliable is critical when it comes to servicing the technology that keeps your business running.

Wherever you are in the world, our experts are on hand to support your needs. From installation, through to calibration, repair, and preventative maintenance, we've got you covered. That's because at Industrial Physics, we're not just suppliers, we are here for you as trusted partners.

Whatever your requirement may be, if you're looking for the highest quality of test and inspection solutions to ensure the quality of your products, the team at Industrial Physics are here to support you.





"The technical support team at Industrial Physics have made sure that when equipment needs support, it is done right away.

We have experienced very minimal downtime due to their dedication! I can't express how happy I am with their support!"

Gicole Paterson, Quality Assurance Chemist, Blues City Brewery, USA

Get in touch

Find out more about how we can support your unique needs, get in touch today.

Email: info@industrialphysics.com

industrialphysics.com